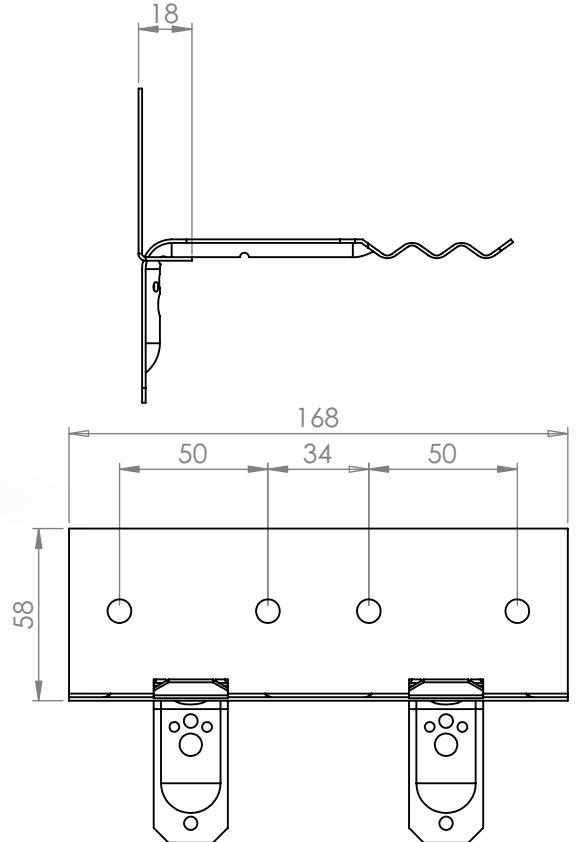


Face Fix Slide Veneer Tie



Medium duty shown - sliding bracket interchangeable

DESCRIPTION

Face fix slide veneer tie. For fastening masonry to new or existing structures. Install flush with clay bricks and 15mm clearance with other types of masonry.

FEATURES

- Clay brick
- Maximum cavity 125mm
- Medium & heavy duty
- Universal applications / remedial
- Australian design & tested AS/NZS 2699.2:2020

FIXING REQUIREMENTS

- 60mm x 6mm dia AM premium concrete screw (Concrete)
- 32mm x 5mm dia mushroom spikes head anchor (Concrete)
- Cerra Multipurpose Screw hex head 10g X 35mm (Metal / Timber)
- For more information contact us with your project requirements.

CORROSION CHARACTERISTICS

Galvanised Z600 (R2)
 Hot dipped galvanising (R3)
 Stainless steel 316L (R4)
 Conforms to corrosion resistance set by AS/NZS 2699.2:2020 / AS 3700.

ORDERING INFORMATION

When ordering please supply use with the part number and quantity you require

